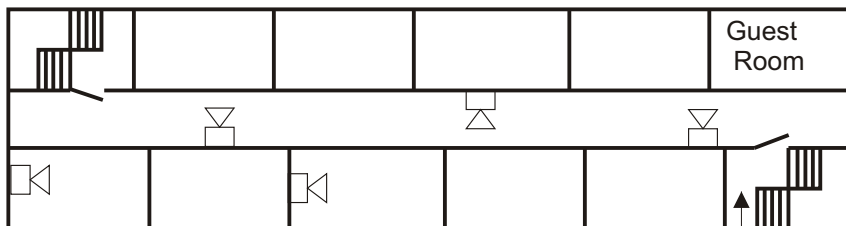


High Rise Voice Evacuation System



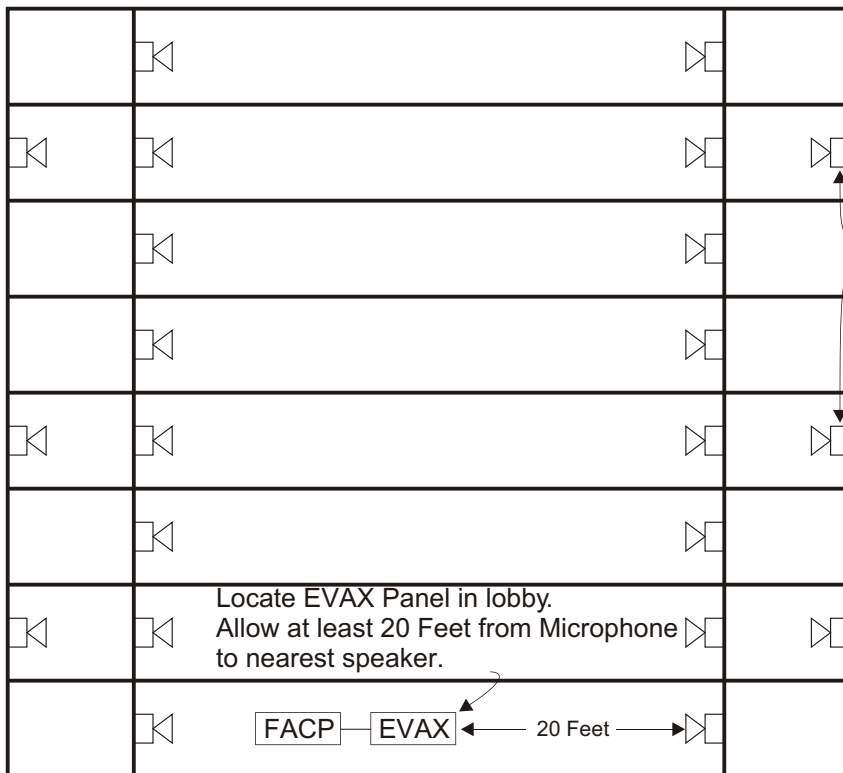
Typical Floor Plan

Use of 3 evacuation speakers per floor is typical in smaller buildings. At least one evacuation speaker is required per floor.

Stairwell

1/2 Watt tap may not be adequate to allow sound to penetrate into guest rooms or apartments 1 Watt or more may be necessary for this coverage.

Individual evacuation speakers may be needed inside apartments depending on the type of occupancy and the AHJ.



Typical speaker placement in stairwells - one 1/2 Watt speaker every 2nd or 3rd floor.

Locate EVAX Panel in lobby.
Allow at least 20 Feet from Microphone to nearest speaker.

FACP — EVAX — 20 Feet —>

Typical Elevation View - High Rise Building

Notes:

- 1) This type of voice evacuation system may operate as a "General Alarm" system in smaller buildings if that operation is acceptable to the Authority Having Jurisdiction.
- 2) If zoned evacuation is required, use Evax zone splitters. Floor Above / Floor Below operation may be automatically controlled by the FACP using auxiliary relay contacts or addressable control modules.