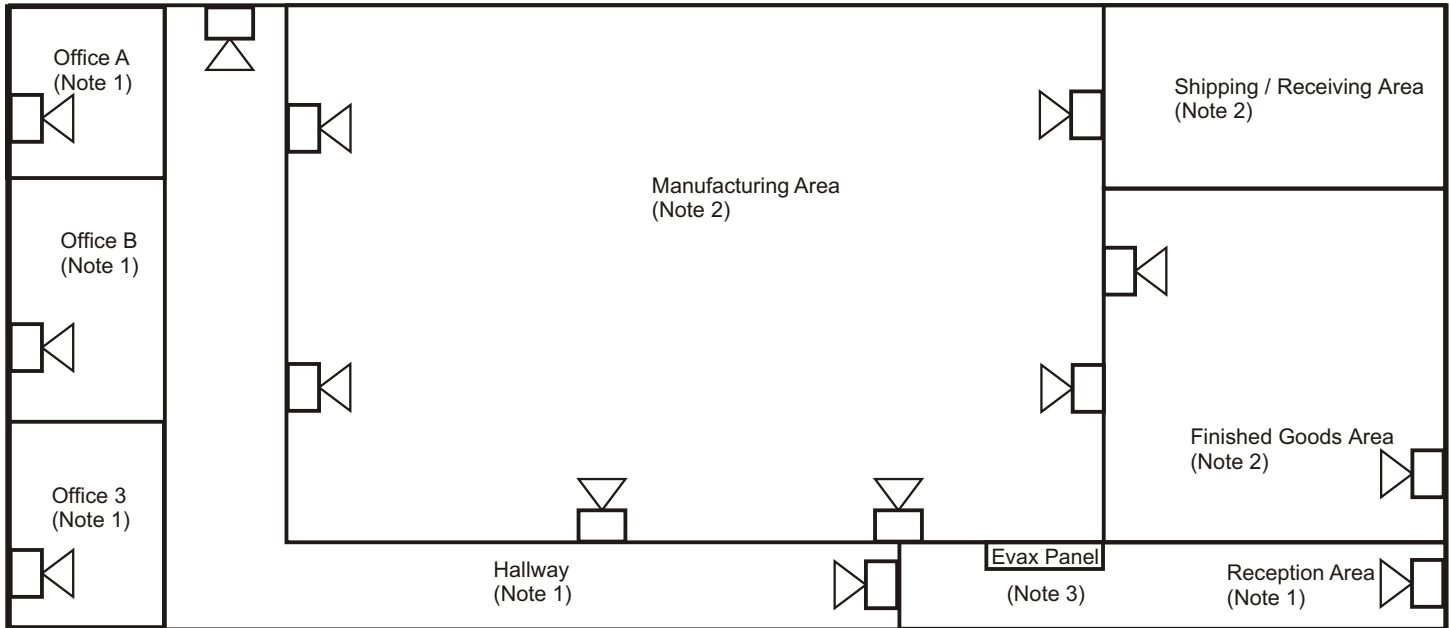


## Manufacturing Facility Application



### Notes:

Treat larger facilities, i.e., manufacturing or campuses, like a system comprised of smaller individual applications. Always include strobes where required by ADA and the local AHJ.

1) For offices, hallways, and reception areas, locate and size speakers to provide sound levels +15dB above ambient.

2) For Manufacturing, Shipping/Receiving, and Finished Goods areas, locate and size speakers to provide sound levels +15 dB to +20 dB above ambient.

3) Locate Evax Panel so the paging microphone is at least 20' away from any evacuation speaker to prevent feedback.